

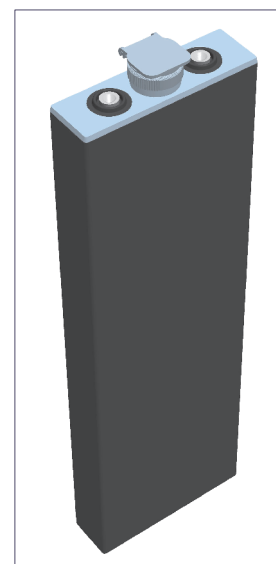
# 2PzB 140

(2V140Ah/5HR)



## Specification

Voltage Per Unit	2V(single cell)
Capacity	140Ah@5hr-rate to 1.70V per cell @25°C
Weight	Approx. without electrolyte 8.4 Kg Approx. including electrolyte 10.0 Kg
High Rate Discharge Current	140 A
Operating Temperature Range	Discharge: -40°C~60°C Charge: -20°C~50°C Storage: -40°C~60°C
Optimal Operating Temperature Range	25°C ± 5°C
Maximum Charging Current	21.0 A
Cycle charged	2.65 to 2.85 VDC/unit Average at 25°C
Self Discharge	Self-discharge ratio less than 5% per month at 25°C. Please charge batteries before using.
Terminal	D2(M10 Copper Terminals) & D4(Lead Terminals)
Dimensions (L×W×H×TH)	45mm×158mm×492mm×522mm(Total High)



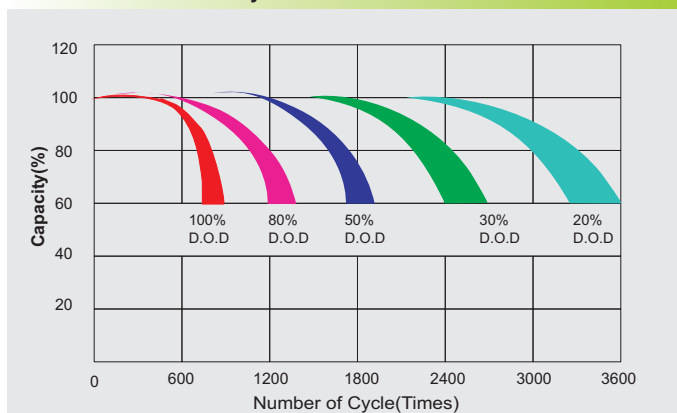
## Constant Current Discharge Characteristics : A(25°C)

F.V/Time	30MIN	1HR	2HR	3HR	4HR	5HR	6HR	8HR	10HR
1.60V	132.6	92.9	53.8	40.3	32.9	29.5	25.6	19.9	16.4
1.65V	129.6	90.7	52.6	39.4	32.1	28.8	25.0	19.4	16.1
1.70V	126.0	88.2	51.1	38.3	31.2	28.0	24.3	18.9	15.6
1.75V	121.2	84.8	49.1	36.8	30.0	26.9	23.3	18.2	15.0
1.80V	115.7	81.0	46.9	35.1	28.7	25.7	22.3	17.4	14.3
1.85V	109.6	76.8	44.5	33.3	27.2	24.4	21.1	16.4	13.6

## Constant Power Discharge Characteristics : W(25°C)

F.V/Time	30MIN	1HR	2HR	3HR	4HR	5HR	6HR	8HR	10HR
1.60V	248.0	178.8	105.7	79.9	65.3	58.6	50.8	39.6	32.7
1.65V	243.6	175.2	103.5	78.4	64.0	57.5	49.8	38.8	32.1
1.70V	239.5	170.5	100.8	76.5	62.4	56.0	48.5	37.8	31.2
1.75V	230.5	164.0	96.9	73.5	60.0	53.8	46.7	36.3	30.0
1.80V	220.3	157.5	93.1	70.2	57.3	51.4	44.6	34.7	28.7
1.85V	210.0	150.3	88.8	66.6	54.3	48.7	42.2	32.9	27.2

## Life characteristics of cyclic use



## Charge characteristic Curve for cycle use

